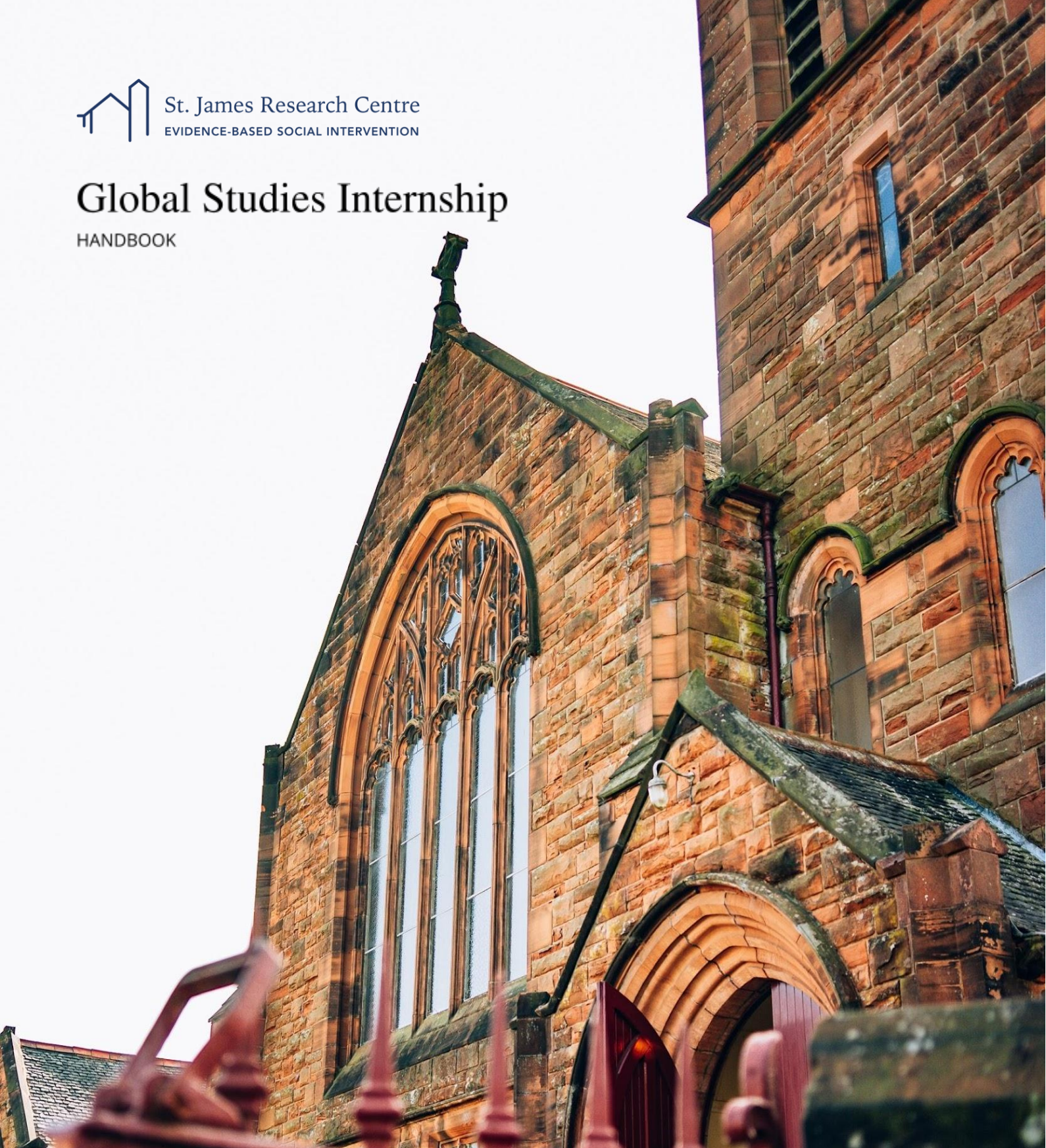




St. James Research Centre
EVIDENCE-BASED SOCIAL INTERVENTION

Global Studies Internship

HANDBOOK



St. James Research Centre's Global Studies Internship is a unique programme that combines targeted studies and hands-on experience. Our goal is to equip future leaders with the skills, knowledge, and tools to implement effective and sustainable solutions to community strengthening, modern slavery, and child protection.

This handbook provides all the information you need to know about the GSI programme, including work placements, accommodation, and arriving in the UK.

Let's get started!

Work Placements

PART 1

ST. JAMES RESEARCH CENTRE (SJRC)

The GSI programme begins with a three- or six-month internship at St. James Research Centre (SJRC) in Scotland and an optional additional six months at one of Global Family's international programme locations. This unique hybrid programme combines classes and practical hands-on experience emphasising social justice, identification and intervention of human trafficking, and strengthening of local communities.

PART 1 SCOTLAND

PART 2 (OPTIONAL) OVERSEAS PLACEMENT

3 or 6 months

6 months

WORK EXPERIENCE

Interns will work at SJRC alongside our team of researchers and practitioners. They typically work Tuesday-Friday, 10am-5pm. Interns are placed in one or more teams according to their skills and interests. These teams include:

Non-Profit
Management

Administration

Fundraising and
Development

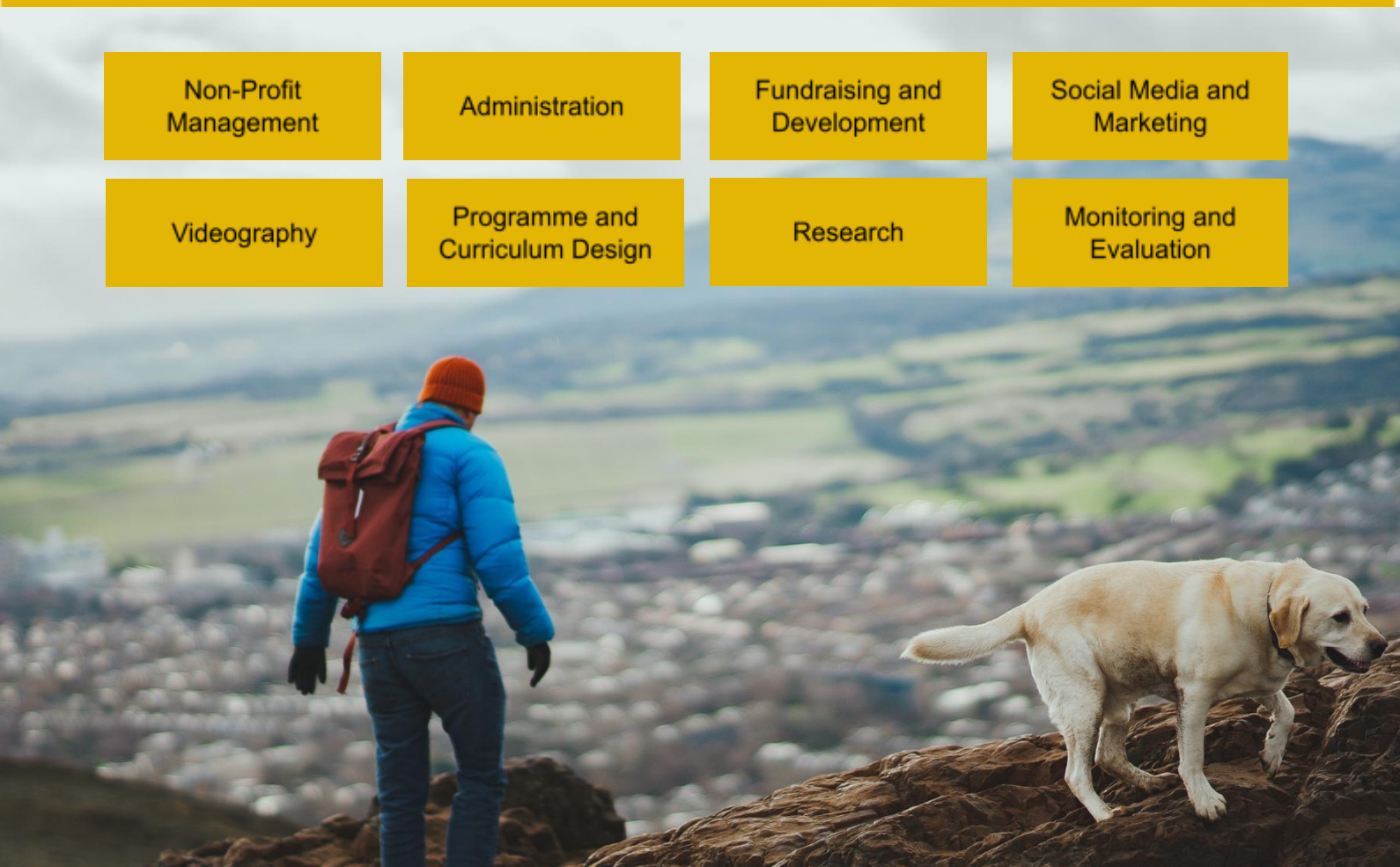
Social Media and
Marketing

Videography

Programme and
Curriculum Design

Research

Monitoring and
Evaluation



EDUCATION

Interns may choose to take courses at SJRC during their internship. SJRC offers courses and trainings in community development, non-profit management and governance, missiology, programme evaluation, modern slavery, and orphan care. The GSI programme includes one free course, with each additional course taken during the internship 75% off. Courses are taught by a mixture of researchers and practitioners, creating a rich diversity of theoretical and practical teaching. Find our full list of [modules](#) and [courses](#) on the SJRC website.



SKILLS DEVELOPMENT

When courses are not running, interns are provided with skills development from our team in Scotland and overseas. Skills development workshops and research presentations are held on a variety of topics. Here are some skills workshops that were offered in 2021!

Qualitative Data Collection and Analysis

Videography

Team Building in Community Development

How to Read Aquinas

Conducting Systematic Reviews

Creating CVs and Cover Letters

Characteristics of CSEC in Hong Kong

PART 2

OVERSEAS PLACEMENT

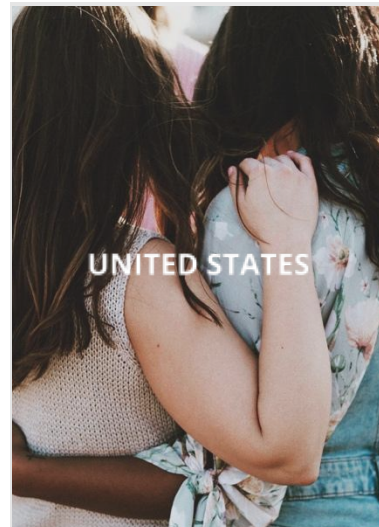
After completing an internship at SJRC, interns may choose to continue the GSI programme with a work placement at one of our overseas programme locations. SJRC is an initiative of [Global Family Care Network](#), an international non-profit organisation. Our mission is to preserve the family and protect at-risk children with the assistance of community organisations, volunteer caregivers, and donors. Our vision is to help as many children as possible who are victims of poverty, exploitation, and abuse by modelling and sharing principled methods that represent the best possible outcome.

PART 1 SCOTLAND

3 or 6 months

PART 2 (OPTIONAL) OVERSEAS PLACEMENT

6 months



Interns will work with our amazing in-country teams to design and implement community development, education, youth empowerment, shelter, and orphan care programmes. We will work with you during your time at SJRC to determine your overseas placement based on programme availability, needs of the team, and your qualifications and skills.

Accommodation

HOUSING AT SJRC

SJRC provides a limited amount of accommodation at the research centre. We are located in Falkirk, Scotland. Our office, trainings, and student accommodation are at St. James Church, built in 1898, and just a short walk from Falkirk's downtown and restaurants, shopping, gyms, and a movie theatre. Accommodation consists of a shared kitchen, shared dormitory style rooms, and shared bathrooms. Falkirk has two train stations, Falkirk Grahamston and Falkirk High, both of which have regular trains to Glasgow and Edinburgh, as well as north to Stirling, Perth, Dundee, and Aberdeen.

What you'll need to bring:

- Adequate clothing, including jackets for cold weather
- Personal toiletries
- Bed sheets, duvets, and pillows (please see the following links for linen packs that you can order online: [The Towel Shop](#), [Linen and Moore](#), [Noah's Box](#), [Uni Kit Out](#), and [Mitre Linen](#))
- Hangers
- Ear plugs if you're a sensitive sleeper
- Towels
- Laundry detergent
- Umbrella and/or water-resistant clothing



FALKIRK

SJRC is conveniently located in the central belt of Scotland, around a 30-minute train ride to Edinburgh, Glasgow, and Stirling. Falkirk itself is full of character, local restaurants, well known attractions and tourist sites in Scotland. With Edinburgh being a UNESCO world heritage site and Glasgow a major hub for shopping and restaurants in the UK, what's not to love?

"Falkirk" originates from the Gaelic for "speckled church", which was then translated into the Scots "Faw Kirk." Falkirk's history stretches back to Roman times. The Antonine Wall, which marked the northern frontier of the Roman Empire and stretches westwards to Old Kilpatrick, passes through the town. Falkirk's strategic importance is highlighted by the two battles that were fought there, 450 years apart. William Wallace was defeated in 1298 by Edward I at the Battle of Falkirk, while in 1746, the Battle of Falkirk Muir saw the Jacobites, under Bonnie Prince Charlie, get the better of government troops.

Falkirk's pedestrianised town centre has attractive streets and wynds and handsome buildings. Just off the High Street is the Faw Church (or Trinity, as is now known), built upon the site of the ancient place of worship that gave the town its name. The oldest parts of the building date back to the twelfth century. Notable tombstones in the graveyard include Sir John de Graeme, killed at the Battle of Falkirk in 1298. South-east of the town centre, Callendar Park and house is a must-visit attraction. Covering more than 170 acres and complete with its own wee loch, there are a multitude of beautiful trails and walks amid the grounds, which boast beautiful ornamental gardens and an Arboretum. The park also includes a section of the Antonine Wall, which dates back to the 140s AD.

To the west of the town, you'll also need at least a day to explore the Falkirk Wheel. Opened in 2002, this engineering and architectural wonder links the Forth and Clyde and Union canals, with a giant boat lift. While you're there, be sure to enjoy a boat ride on the wheel which run hourly.

You'll also need time to take in the scale and achievement of Falkirk's other man-made wonder, the two 30m tall horse head sculptures known as The Kelpies. Created by sculptor Andy Scott, they look magnificent day or night. The Helix Park in which they sit offers great walking, cycling, boating and kids' play too, plus a cafe. The Kelpies come from an old Celtic legend of mythical water-spirit creatures that could shape-shift and inhabited the lochs and pools of Scotland.





Fees

PROGRAMME COSTS

The fee for the Global Studies Internship is £690 a month for a three-month internship, or £545 a month for a six-month internship.* We offer a 10% discount for interns who pay the full fee upfront.

The fee includes:

Hostel style housing, shared room, kitchen, and living areas

An accredited course offered at SJRC

75% of all additional courses taken at SJRC

Skills-based learning workshops, including for research and professional development

Work experience

Personal mentoring

Individual coaching for undergraduate and graduate school applications and research proposals

For interns who want to raise funds for their trip, a personalised crowd-funding page on our website DirectGood.org, which provides tax-deductible receipts to donors in the United States

The fee does not include food, health insurance, airfare, entertainment, or local transportation. A £295 non-refundable deposit is due upon the approval of your application. The deposit will apply directly to your first month's fee. The fee for placement in one of Global Family's international locations will vary by placement country.

RAISING FUNDS FOR YOUR TRIP

You may want to ask family and friends to help support your internship! If you would like to raise funds, we will provide you with a personalised crowd-funding page on our project-based giving website, DirectGood.org. Donors who give on the platform will receive tax-deductible giving receipts in the United States. Once funds are raised through this platform, they will be automatically used to pay for the programme fee, with the remaining funds disbursed to you through a bank transfer.

* USA accredited transcript fee is 30.00 GBP per course

Financial Procedures

In raising funds for your upcoming assignment, you may ask your supporters to send funds to Global Family Care Network so they can be issued a tax-deductible receipt. We are only able to provide tax-deductible receipts to donors from the United States. Please ask them to identify your name with their giving. Donations can be made in the following ways:

1. Online credit card donations made via your personal Direct Good project page. Funds raised through Direct Good are subject to a 10% administrative fee.
2. Online credit card donations made via www.globalfamily.care.
3. Donations made via check can be sent to P.O. Box 13160, Bakersfield, CA 93389. Please have your supporter make the check payable to Global Family Care Network, Inc. and write your name in the memo line.

You may raise funds for your airfare and up to the national living wage in the country to which you are assigned. Your room 'in country' is provided by Global Family Scotland. The median income for an individual in Scotland is GBP 16,926 per year, or (approximately) USD 21,000.

The funds you raise will be disbursed to your personal checking or savings account on a monthly basis by the 10th day of the following month. If you raise over and above your specific amount, you will be asked to choose Global Family, Direct Good, or Daughter Project international projects to which to designate the funds.

You are considered a self-employed independent contractor. All funds disbursed to you will be reflected in a 1099 in January of the following year. It is important to keep receipts for all expenditures related to your travel and expenses related to your assignment as these expenses can be deducted from your taxable income.

If you are finishing your time overseas and planning another term, you may begin fundraising for your new term even before returning home. Global Family will hold your funds for up to 12 months. If, after 12 months, you are unable to return to your assignment, you may choose a programme within Global Family Care Network (including the Daughter Project and Direct Good) for which your funds may be designated.

